

PLS4 (Efector IG0330) Inductive Proximity Limit Switch

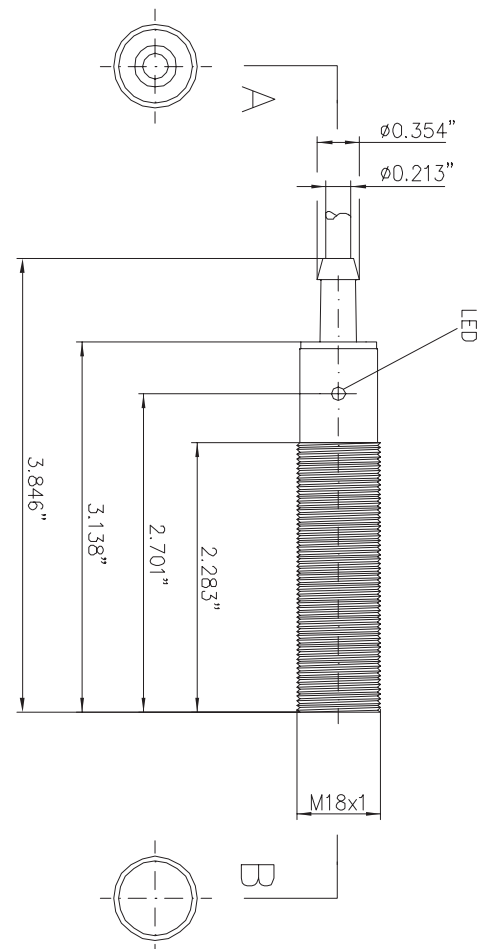
FEATURES

Produced by Efector, the FNW PLS4 inductive proximity limit switch is ideally suited for industrial applications where corrosion resistance is needed or where mechanical connections are not desired. Primarily used for position indication on knife gate and wedge gate valves, FNW can custom mount one or more PLS4's for your control needs. Additional configurations are available. Contact FNW with your application requirements.



SPECIFICATIONS

Connection Type:	Plastic thread M18 x 1 Cable (non-flush mount)
Sensing Range:	8mm (nf) non-flush mountable
Electrical Design:	AC / DC
Output:	normally open
Operating Voltage:	20-250 VAC/VDC
Current Rating (continuous):	350mA AC @ 122°F, 250mA AC @ 176°F, 100mA DC
Current Rating (peak):	Inrush: 2.2 A (20 ms / 0.5 Hz)
Minimum Load Current:	5mA
Voltage Drop:	< 6.5 VAC / < 6 VDC
Leakage Current:	< 2.5mA @ 250 VAC, < 1.3mA @ 110 V AC, < 0.8mA @ 24 V DC
Real Sensing Range:	8mm ± 10 %
Operating Distance:	0 - 6.5mm
Switch-Point Drift:	-10 - 10% / Sr
Hysteresis:	1 - 15% / Sr
Switching Frequency:	25Hz AC / 50Hz DC
Correction Factors:	mild steel = 1 stainless steel approx. 0.7 / brass approx. 0.4 / Al approx. 0.3 / Cu approx. 0.2
Operating Temperature:	-13°F - 176°F
Protection:	IP 67
EMC:	EN 60947-5-2; EN 55011 class B
Housing Material:	Polybutyleneterephthalate (PBT)
Function Display	Red LED
Switching Status:	PVC cable / 2 m; 2 x 0.5 mm?
Connection:	Brown (BN), Blue (BU)
Wiring Core Colors:	Brown (BN), Blue (BU)
Accessories (included):	2 lock nuts
Enclosure Rating:	NEMA 3, 4, 6, 12, 13



MLS4 (Allen-Bradley 802T-AP) Mechanical Limit Switch

FEATURES

Produced by Allen-Bradley, the FNW MLS4 mechanical limit switch is a heavy duty, ruggedly designed switch for industrial applications. Primarily used for position indication on knife gate and wedge gate valves, FNW can custom mount one or more MLS4's for your control needs. Additional configurations are available. Contact FNW with your application requirements.



SPECIFICATIONS

Connection Type: Front mount, plug-in style with NPT conduit entry

Electrical Design: AC / DC

Output: 2 circuit SPST

Current Rating (continuous): 10A

Make/Break Current

Rating @ 120VAC: 60A make, 6A break

@ 240VAC 30A make, 3A break

@ 480VAC 15A make, 1.5A break @ 480VAC

@ 600VAC 12A make, 1.2A break @ 600VAC

@ 115-125VDC 0.4A make @ 115-125VDC

@ 230-250VDC 0.2A make @ 230-250VDC

@ 550-600VDC 0.1A make @ 550-600VDC

Travel to Operate

Contacts: 13°

Travel to Reset

Contacts: 7°

Maximum Travel: 90°

Torque to Operate: 2.6 in-lb max

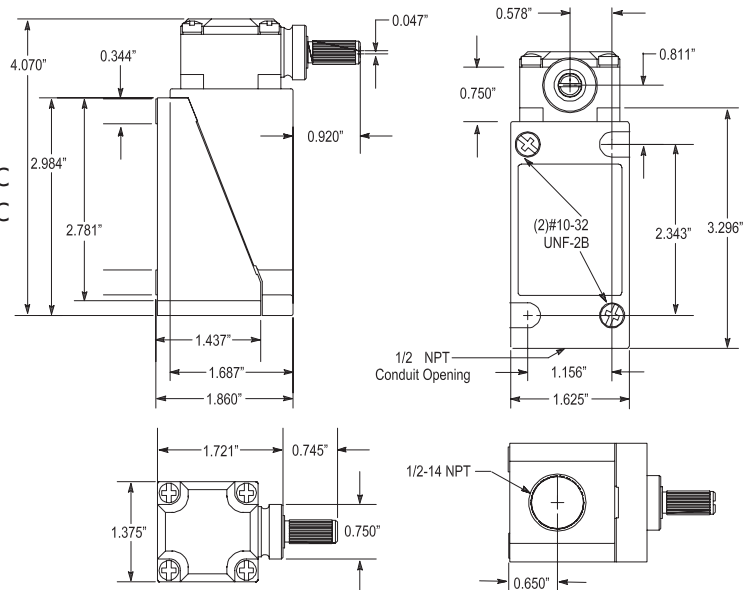
Operating

Temperature: 0°F (non-moisture environments below +32°F) - 230°F

Protection: IP 65 (IEC 529)

Wiring Terminals: Screw Clamp

Enclosure Rating: NEMA 4 and 13



DOC: FNWLIMITSWITCHES05 Ver. 7/05

© 2005 - FNW. All rights reserved.

The FNW logo is a registered trademark of Ferguson Enterprises, Inc.

The contents of this publication are presented for information purposes only, and while effort has been made to insure their accuracy, they are not to be construed as warranties or guarantees, expressed or implied, regarding the products or services described herein or their use or applicability. All sales are governed by our terms and conditions, which are available on request. We reserve the right to modify or improve the designs or specifications of our products at any time without notice.