

BRONZE 250 WOG Y-STRAINER

Features:

- 250 WOG
- 150 PSI Steam
- Threaded Ends
- NPT Ends Comply With ANSI/ASME B1.20.1
- Cast Bronze Body
- 20 Mesh Stainless Steel Screen
- Blow-off Plug Included
- Test Pressure:
 Shell (Hydro) - 375 PSI



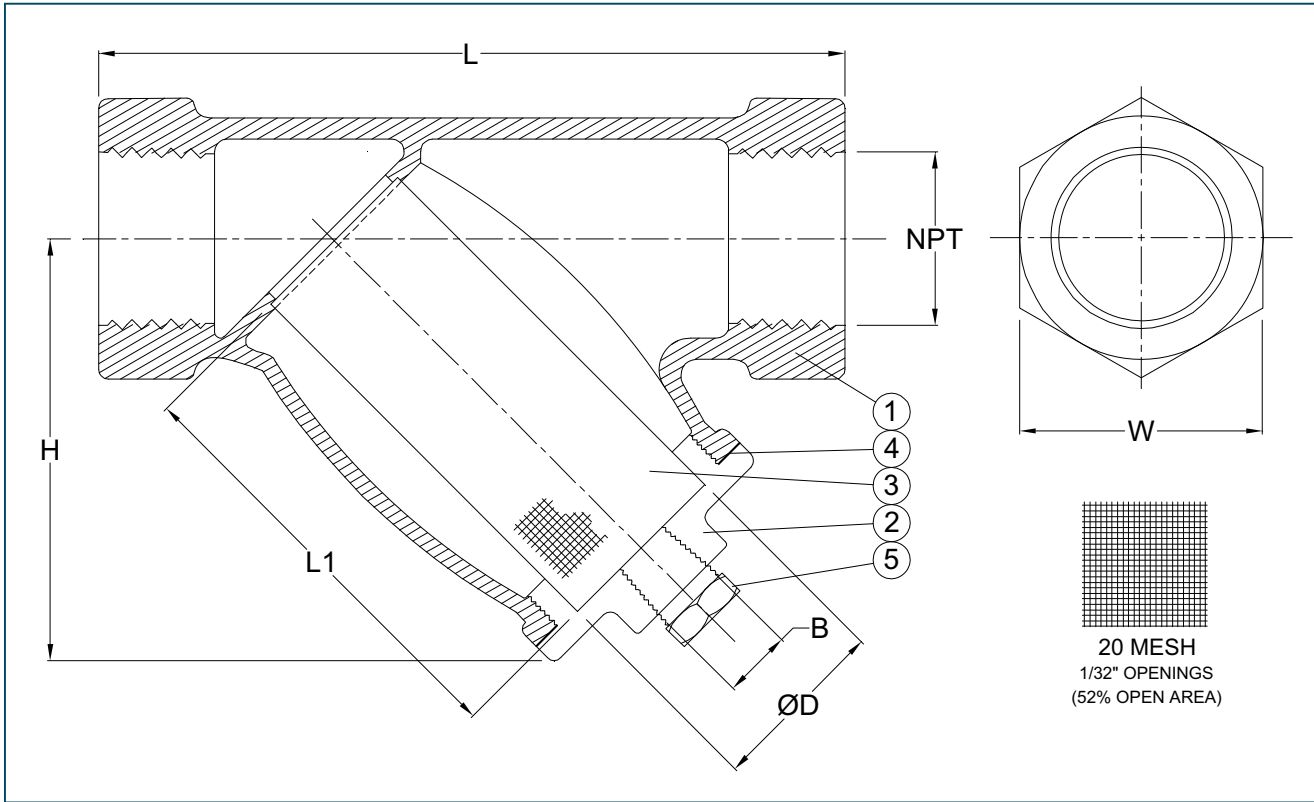
Cv & Weight (lbs.)

Size	Cv	Wt (Lbs)
3/8	-	0.82
1/2	9.2	0.82
3/4	17.5	1.23
1	28	2.12
1-1/4	45	2.82
1-1/2	62	4.37
2	96	7.72

Figure Number Matrix

F N W 509 SIZE	
<u>SIZE CODES</u>	
3/8 = C	1-1/4 = H
1/2 = D	1-1/2 = J
3/4 = F	2 = K
1 = G	
<u>REPLACEMENT SCREENS</u>	
3/8 & 1/2 = FNW509SCD	
3/4 = FNW509SF	
1 = FNW509SG	
1-1/4 = FNW509SH	
1-1/2 = FNW509SJ	
2 = FNW509SK	

BRONZE 250 WOG Y-STRAINER



Dimensions (Inches)

NPT	L	H	W	B (npt)	L1	ØD
3/8	3.08	1.93	1.14	1/4	1.56	0.62
1/2	3.08	1.93	1.14	1/4	1.56	0.62
3/4	3.86	2.44	1.38	1/4	2.19	0.87
1	4.45	2.76	1.73	3/8	2.62	1.12
1-1/4	5.26	3.19	2.05	3/8	3.07	1.38
1-1/2	6.26	3.82	2.36	1/2	3.46	1.69
2	7.64	4.72	2.83	1/2	4.65	2.17

Standard Materials

Ref. No.	Description	Material	Qty
1	Body	Bronze ASTM B584-C84400	1
2	Cover	Bronze ASTM B584-C84400	1
3	Screen	Stainless Steel ASTM A167-304	1
4	Gasket	Non-Asbestos	1
5	Plug	Brass C36000	1

DOC: FNW509BYS08 Ver. 3/09

© 2009 - FNW. All rights reserved.
The FNW logo is a registered trademark of Ferguson Enterprises, Inc.

The contents of this publication are presented for information purposes only, and while effort has been made to ensure their accuracy, they are not to be construed as warranties or guarantees, expressed or implied, regarding the products or services described herein or their use or applicability. All sales are governed by our terms and conditions, which are available on request. We reserve the right to modify or improve the designs or specifications of our products at any time without notice. Always verify that you have the most recent product specifications or other documentation prior to the installation of these products.