

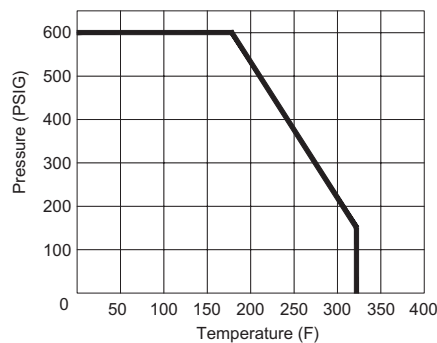
Figure 440 BRASS BODY BALL VALVES



2 PC FULL PORT 600 WOG w/ISO MOUNTING PAD

Features:

- 600 WOG
- 150 WSP
- Full Port
- Blow-out Proof Stem
- Double O-ring Viton® Stem Packing
- Threaded NPT Ends
- Forged Brass Body & End Cap
- O-ring Backed Seats for Reduced Operating Torque
- ISO 5211 Actuator Mounting Pad



The figure 440 ball valve utilizes Viton® o-ring backed seats to reduce operating torques. This feature provides for a smaller actuator requirement and when coupled with the ISO 5211 direct mount actuator pad, makes for a superior, yet economical, package.

Figure Number Matrix

FNW 4 4 0 X	
SIZE CODES	
1/4 = B	1-1/2 = J
3/8 = C	2 = K
1/2 = D	2-1/2 = L
3/4 = F	3 = M
1 = G	4 = P
1-1/4 = H	

For other valve materials or configurations, contact FNW Valve at (503) 287-8383 for sales assistance.

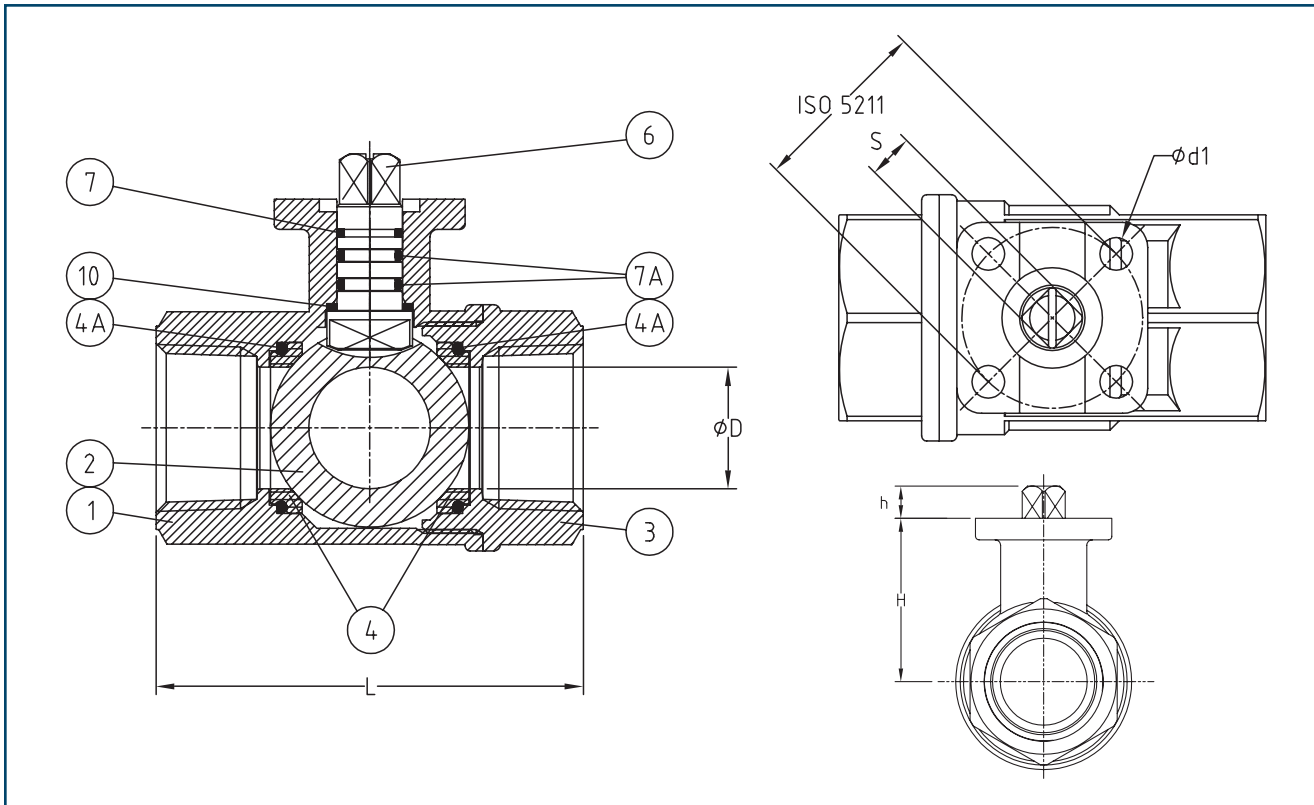
Cv & Weights

Size	Cv	Wt. (Lbs)
1/4	6	0.8
3/8	7	0.8
1/2	19	1.0
3/4	19	1.0
1	34	1.6
1-1/4	50	2.2
1-1/2	268	4.3
2	309	5.6
2-1/2	629	8.8
3	944	13.3
4	1493	21.5

Torque

Size	Torque (in-lbs)
1/4	52
3/8	52
1/2	52
3/4	52
1	52
1-1/4	52
1-1/2	154
2	154
2-1/2	267
3	267
4	658

2 PC FULL PORT 600 WOG w/ISO MOUNTING PAD



Dimensions (Inches)

Size	ØD	L	H	h	S	ISO 5211	Ød1
1/4	0.39	2.64	1.28	0.35	0.354	1.42/F03	0.24
3/8	0.39	2.64	1.28	0.35	0.354	1.42/F03	0.24
1/2	0.56	2.64	1.28	0.35	0.354	1.42/F03	0.24
3/4	0.75	3.00	1.36	0.35	0.354	1.42/F03	0.24
1	0.95	3.35	1.79	0.35	0.354	1.42/F03	0.24
1-1/4	1.18	3.66	1.93	0.35	0.354	1.42/F03	0.24
1-1/2	1.49	4.13	2.52	0.43	0.433	1.97/F05	0.27
2	1.97	4.80	2.88	0.43	0.433	1.97/F05	0.27
2-1/2	2.52	6.10	3.48	0.59	0.551	2.76/F07	0.35
3	3.00	6.89	3.85	0.59	0.551	2.76/F07	0.35
4	3.74	8.03	4.59	0.69	0.669	2.76/F07	0.35

Standard Materials

Ref. No.	Description	Material	Qty
1	Body	Brass CW 617N UNI EN 12165	1
2	Ball	Brass CW 617N UNI EN 12165	1
		(Nickel-Chrome Plated)	
3	End Cap	Brass CW 617N UNI EN 12165	1
4	Seat	PTFE	2
4A	Seat Backing O-ring	Viton®	2
6	Stem	Brass CW 614N UNI EN 12164	1
7	Stem Seal	PTFE	1
7A	Stem O-ring	Viton®	2
10	Thrust Washer	PTFE	1

DOC: FNWBV44008 Ver. 11/08

© 2008 - FNW. All rights reserved.

The FNW logo is a registered trademark of Ferguson Enterprises, Inc.

The contents of this publication are presented for information purposes only, and while effort has been made to insure their accuracy, they are not to be construed as warranties or guarantees, expressed or implied, regarding the products or services described herein or their use or applicability. All sales are governed by our terms and conditions, which are available on request. We reserve the right to modify or improve the designs or specifications of our products at any time without notice.