

# Figure 420 BRASS BODY BALL VALVES



## 2 PC FULL PORT 600 WOG

### Features:

- 600 WOG
- 150 WSP
- Full Port
- Meets NSF-61 Standards (to 2")
- Meets MSS SP-110 Standards
- Blow-out Proof Stem
- Adjustable Packing
- Threaded NPT Ends (ANSI B 1.20.1)
- Forged Brass Body & End Cap
- 100% Electronically Tested in Open and Closed Position at 80 PSI
- Optional Lock Lever
- Optional Stem Extension
- Optional Tee Handle (to 1")
- Optional Oval Handle (to 2")
- Optional SS Ball & Stem (to 2")
- Optional Memory Stop (to 2")



### OPTIONS



Lock Lever



Stem Extension



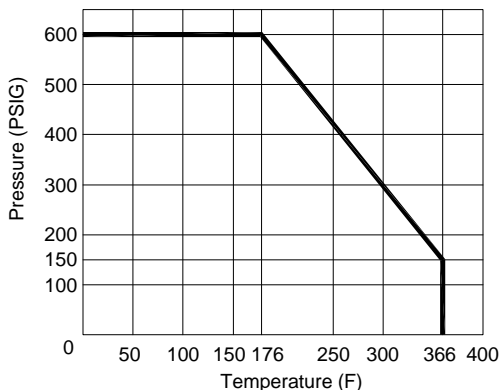
Tee or Oval Handle



SS Ball & Stem



Memory Stop



Up to 2"



C US

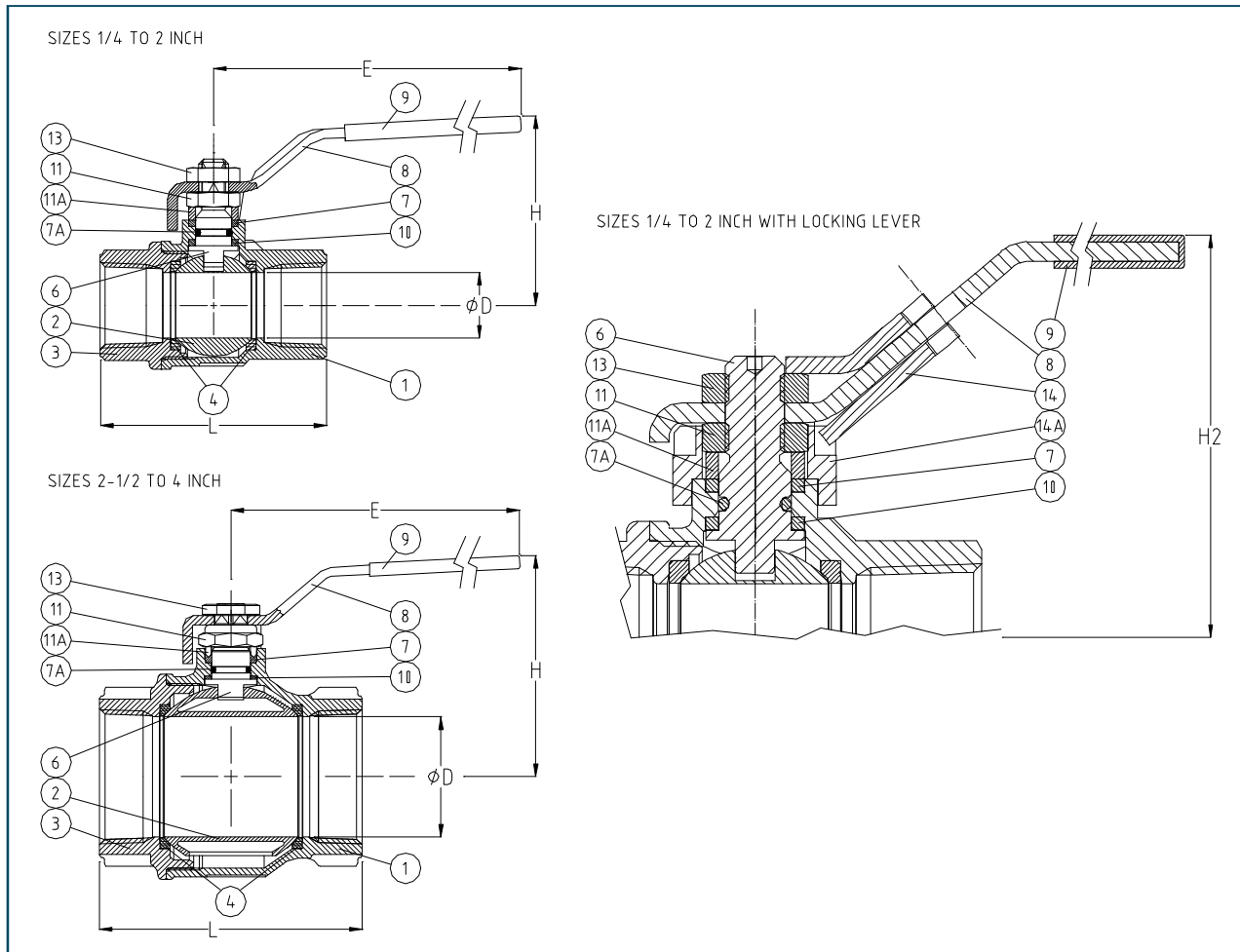
### Gas Approvals:

- CSA Class 3371-10, CGA 3.16, 125 PSIG, -40°F - 149°F, 1/2"-2"
- CSA Class 3371-88, ANSI Z21.15/CSA9.1, 1/2 PSIG, 32°F - 188.6°F, 1/2"-4"
- CSA Class 3371-90, ASME B16.33/b16.38, 125 PSIG, -40°F - 149°F, 1/4"-4"
- CSA Class 3371-92, ASME B16.44, 5 PSIG, -40°F - 149°F, 1/2"-2"
- CSA Class 3371-94, ASME B16.33, 125 PSIG, -40°F - 149°F, 1/2"-4"
- CSA Class 3371-97, UL-125, 250 PSIG, -40°F - 130°F, 1/4"-3/8"
- UL Class YRPV, ANSI/UL-842, 250 PSIG, -20°F - 125°F, 1/4"-4"
- UL Class YSDT, AMSI/UL-125, 250 PSIG, -40°F - 130°F, 1/4"-4"

### Figure Number Matrix

<b>FNW 420 Trim Lever Size</b>	<b>Kit Codes (Order Separately)</b>		
<p><b>TRIM TYPES</b></p> <p>BLANK = BRASS (CHROME BALL) SS = SS BALL &amp; STEM (INCL. LL)</p> <p><b>LEVER TYPES</b></p> <p>BLANK = STANDARD LL = LOCK LEVER (STNDRD. w/SS)</p> <p><b>SIZE CODES</b></p> <p>1/4 = B      1 = G      2-1/2 = L 3/8 = C      1-1/4 = H      3 = M 1/2 = D      1-1/2 = J      4 = P 3/4 = F      2 = K</p>	<p><b>LOCKING LEVER</b></p> <p>1/4 - 1/2 = FNW420LHKBD 3/4 - 1 = FNW420LHKFG 1-1/4 - 1-1/2 = FNW420LHKHJ 2 = FNW420LHKK 2-1/2 = FNW420LHKL 3 = FNW420LHKM 4 = FNW420LHKP</p> <p><b>TEE HANDLES</b></p> <p>1/4 - 1/2 = FNW420THKBD 3/4 - 1 = FNW420THKFG</p>	<p><b>EXTENSIONS</b></p> <p>1/4 - 1/2 = FNW420SEBD 3/4 - 1 = FNW420SEFG 1-1/4 - 1-1/2 = FNW420SEHJ 2 = FNW420SEK 2-1/2 - 3 = FNW420SELM 4 = FNW420SEP</p> <p><b>OVAL HANDLES</b></p> <p>1/4 - 1/2 = FNW420OHKBCD 3/4 - 1 = FNW420OHKFG 1-1/4 - 1-1/2 = FNW420OHKHJ 2 = FNW420OHKK</p>	<p><b>REPLACEMENT LEVER</b></p> <p>1/4 - 1/2 = FNW420HKBD 3/4 - 1 = FNW420HKFG 1-1/4 - 1-1/2 = FNW420HKHJ 2 = FNW420HKK 2-1/2 - 3 = FNW420HKLM 4 = FNW420HKP</p> <p><b>MEMORY STOPS</b></p> <p>1/4 - 1/2 = FNW420MSKBD 3/4 - 1 = FNW420MSKFG 1-1/4 - 1-1/2 = FNW420MSKHJ 2 = FNW420MSKK</p>

## 2 PC FULL PORT 600 WOG



### Cv & Weights

### Dimensions (Inches)

### Standard Materials

Size	Cv	Wt. (Lbs)
1/4	6	0.3
3/8	7	0.3
1/2	19	0.5
3/4	34	0.7
1	50	1.1
1-1/4	104	2.0
1-1/2	268	3.1
2	309	4.2
2-1/2	629	8.0
3	1018	12.9
4	1622	22.0

Size	ØD	E	L	H	H2
1/4	0.39	3.78	2.02	1.65	1.83
3/8	0.39	3.78	2.02	1.65	1.83
1/2	0.59	3.78	2.44	1.81	1.99
3/4	0.78	4.76	2.71	2.28	2.48
1	0.98	4.76	3.07	2.44	2.64
1-1/4	1.25	5.94	3.42	3.00	3.15
1-1/2	1.57	5.94	3.89	3.23	3.38
2	1.94	6.30	4.33	3.74	3.74
2-1/2	2.56	8.11	5.59	4.84	-
3	3.15	8.11	6.45	5.23	-
4	3.94	10.27	7.60	6.49	-

Ref. No.	Description	Material	Qty
1	Body	Brass CW 617N UNI EN 12165	1
2	Ball	Brass CW 617N UNI EN 12165 (Nickel-Chrome Plated)	1
3	End Cap	Brass CW 617N UNI EN 12165	1
4	Seat	PTFE	2
6	Stem	Brass CW 614N UNI EN 12164	1
7	Stem Packing	PTFE	1
7A	Stem O-ring	NBR 75 Shore A	1
8	Handle	Fe P 11 UNI 5867	1
9	Handle Cover	Vinyl	1
10	Thrust Washer	PTFE	1
11	Gland Nut	Zinc Plated Steel 6S	1
11A	Packing Gland	Brass CW 614N UNI EN 12164	1
13	Handle Nut	Zinc Plated Steel 6S	1
14	Locking Pad	Fe P 11 UNI EN 10111	1
14A	Bushing	ZAMA G Zn A14 UNI EN1774	1

DOC: FNWBV420SSLL07 Ver. 7/09

© 2009 - FNW. All rights reserved.  
The FNW logo is a registered trademark of Ferguson Enterprises, Inc.

The contents of this publication are presented for information purposes only, and while effort has been made to ensure their accuracy, they are not to be construed as warranties or guarantees, expressed or implied, regarding the products or services described herein or their use or applicability. All sales are governed by our terms and conditions, which are available on request. We reserve the right to modify or improve the designs or specifications of our products at any time without notice. Always verify that you have the most recent product specifications or other documentation prior to the installation of these products.