

ELECTRIC QUARTER-TURN ACTUATORS

Features

FNW offers electric valve actuators for quarter-turn valves such as ball valves and butterfly valves. Actuators can be supplied with numerous options including, but not limited to, electro-mechanical brakes, auxiliary position switches, feedback potentiometers, 4-20mA positioners, alternate motor voltages, and explosion proof housings.

FNW 100E, 200E, and 300E

- -40°F to +150°F Temperature Range (heater required below 0°F)
- NEMA 4 Rated Enclosure
- Single 1/2" NPT Conduit Entry
- Stainless Steel Output Drive
- ISO Standard Bolting and Drive Dimensions
- Manual Override Standard (except on NEMA 7 and DC motor units)
- Permanent Lubrication
- Mountable In Any Position

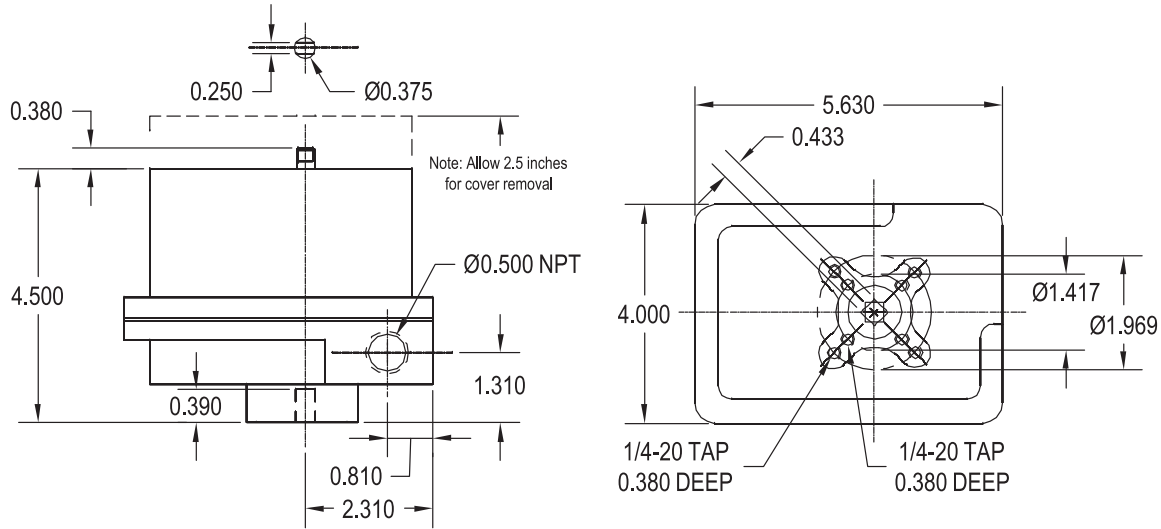
FNW 600E, 1000E, and 1600E

- -40°F to +140°F Temperature Range
- CSA Weather-Proof Enclosure (conforms to NEMA 1, 2, 3, 3R, 4, 4X, & 12)
- Dual 1/2" NPT Conduit Entries
- Heater & Thermostat
- Hardened Steel Drive Shaft
- ISO Standard Bolting and Drive Dimensions
- Declutch Manual Override Standard with Mechanical Position Indicator
- Permanent Lubrication
- Mountable In Any Position

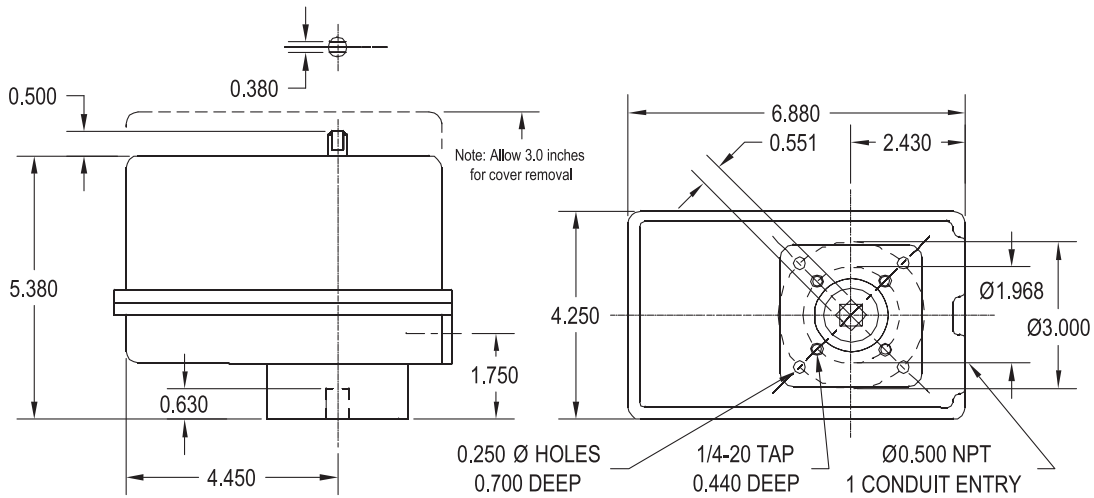


Standard Specification	Model Number					
	100E	200E	300E	600E	1000E	1600E
Output Torque (in-lbs)	100	200	300	600	1000	1600
Cycle Time (sec.)	2.5	5	5	15	15	30
Duty Cycle (120Vac)	25%	25%	25%	30%	100%	100%
Lock Rotor Current	0.55A	0.75A	0.99A	0.57A	0.69A	0.35A
Weight (lbs)	5	6	6	18	18	18

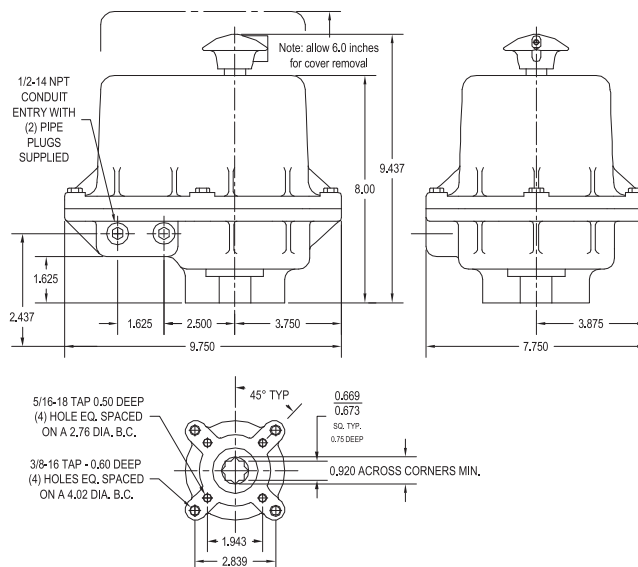
FNW 100E DIMENSIONS



FNW 200E AND 300E DIMENSIONS

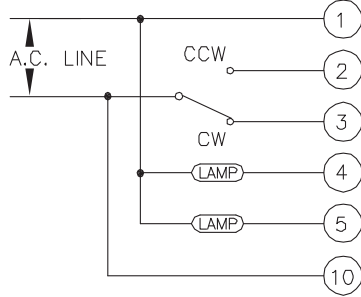


FNW 600E TO 1600E DIMENSIONS



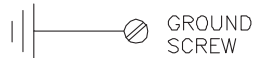
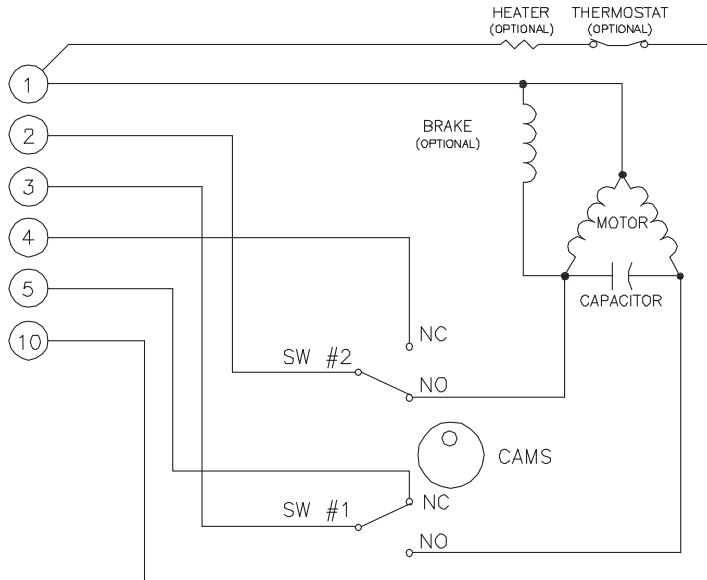
FNW 100E TO 300E STANDARD WIRING DIAGRAM

OPTIONAL FIELD WIRING REFERENCE ONLY - NOT SUPPLIED



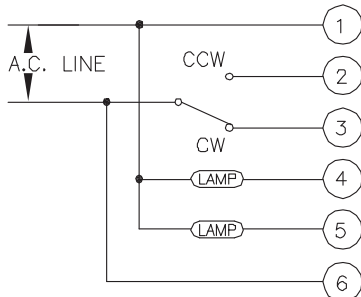
- NOTES:
1. OPTIONAL FIELD WIRING IS SHOWN FOR REFERENCE ONLY AND IS NOT SUPPLIED WITH THE ACTUATOR.
 2. ALWAYS VERIFY SPECIFIC ACTUATOR WIRING TO SPECIFICATION BEFORE INSTALLING.
 3. ROTATION IS VIEWED FROM ABOVE THE ACTUATOR.
 4. SWITCHES CONFIGURED FROM BOTTOM TO TOP (i.e. - SW#1, BOTTOM, SW#2 NEXT, ETC.
 5. CAUTION: ELECTRICAL OPERATION OF THE ACTUATOR MUST BE MADE THROUGH AN INDIVIDUAL SINGLE POLE CONTROL SWITCH IN ORDER TO ISOLATE THE UNUSED MOTOR WINDINGS.
 6. CAUTION: WIRING DIAGRAMS CAN VARY. CONSULT DOCUMENTATION PACKED WITH ACTUATOR.
 7. WIRING DIAGRAM ILLUSTRATES ACTUATOR IN THE FULL CW POSITION.
 8. THIS WIRING DIAGRAM IS FOR STANDARD 120VAC ACTUATORS, FNW MODELS 100E TO 300E.

ACTUATOR WIRING



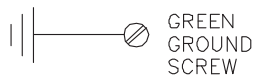
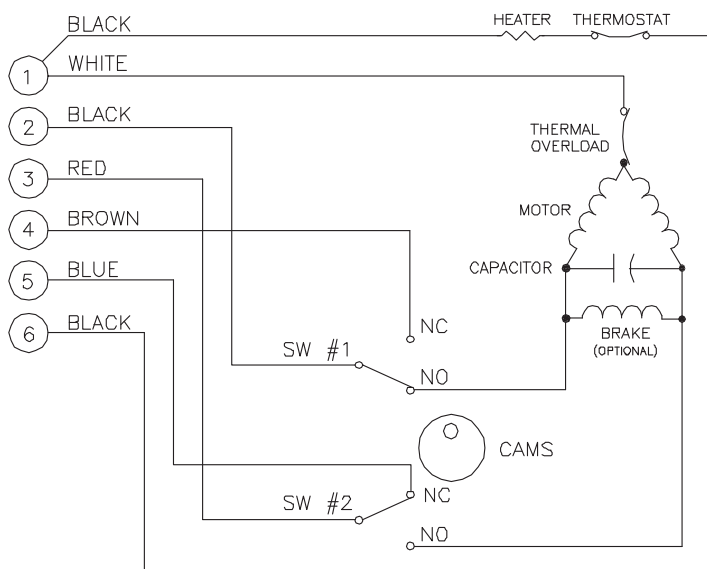
FNW 600E TO 1600E STANDARD WIRING DIAGRAM

OPTIONAL FIELD WIRING REFERENCE ONLY - NOT SUPPLIED



- NOTES:
1. OPTIONAL FIELD WIRING IS SHOWN FOR REFERENCE ONLY AND IS NOT SUPPLIED WITH THE ACTUATOR.
 2. ALWAYS VERIFY SPECIFIC ACTUATOR WIRING TO SPECIFICATION BEFORE INSTALLING.
 3. ROTATION IS VIEWED FROM ABOVE THE ACTUATOR.
 4. THERMAL OVERLOAD SHOWN, RESETS AUTOMATICALLY.
 5. SWITCHES CONFIGURED FROM BOTTOM TO TOP (i.e. - SW#1, BOTTOM, SW#2 NEXT, ETC.
 6. CAUTION: ELECTRICAL OPERATION OF THE ACTUATOR MUST BE MADE THROUGH AN INDIVIDUAL SINGLE POLE CONTROL SWITCH IN ORDER TO ISOLATE THE UNUSED MOTOR WINDINGS.
 7. CAUTION: WIRING DIAGRAMS CAN VARY. CONSULT DOCUMENTATION PACKED WITH ACTUATOR.
 8. WIRING DIAGRAM ILLUSTRATES ACTUATOR IN THE FULL CW POSITION.
 9. THIS WIRING DIAGRAM IS FOR STANDARD 120VAC ACTUATORS, FNW MODELS 600E TO 1600E.

ACTUATOR WIRING





ELECTRIC HIGH OUTPUT ACTUATORS

For valves with high torque requirements in quarter-turn or multi-turn configurations, FNW can supply electric valve actuators from numerous manufacturers. Actuators range from less than one hundred to over one million inch-pounds of torque depending on requirements. Electric actuators can be supplied for simple open/close service, customized for modulation applications, or even tied in to the latest network control protocols. We have the expertise to supply any of your electric actuator needs.

Whatever your electric actuator and control needs are, contact FNW with your specific application requirements.

DOC: FNWELECTACT05 Ver. 3/2010

© 2010 - FNW. All rights reserved.

The FNW logo is a registered trademark of Ferguson Enterprises, Inc.

The contents of this publication are presented for information purposes only, and while effort has been made to ensure their accuracy, they are not to be construed as warranties or guarantees, expressed or implied, regarding the products or services described herein or their use or applicability. All sales are governed by our terms and conditions, which are available on request. We reserve the right to modify or improve the designs or specifications of our products at any time without notice. Always verify that you have the most recent product specifications or other documentation prior to the installation of these products.