

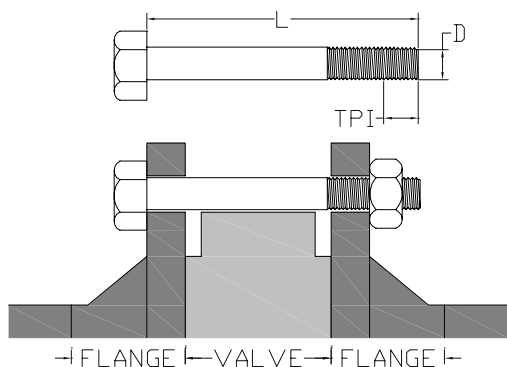
### FNW FIG. 731, 732, 741, 742

FNW figure 7xx-series resilient seated valves are designed to fit between ANSI B16.5 class 150 flanges without flange gaskets. Inside flange diameters should range from slip-on flange bore to schedule 40 weld neck flange bore.

**CAUTION:** Dimensions provided for flange bolting are intended only as a guide. Bolt lengths may vary due to manufacturing tolerances in valves, gaskets, flange bolts and flanges.

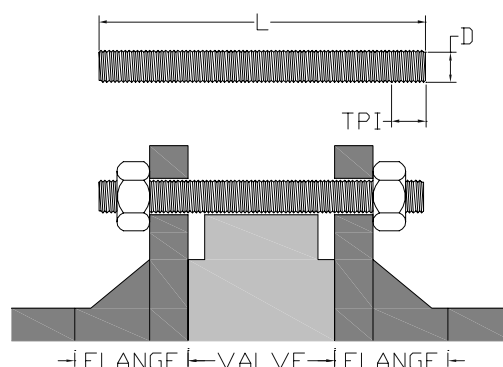
**WARNING:** Improper bolt and stud lengths could result in leakage at the flange resulting in death or serious injury.

#### 731 / 741 Wafer Valve - Cap Screws



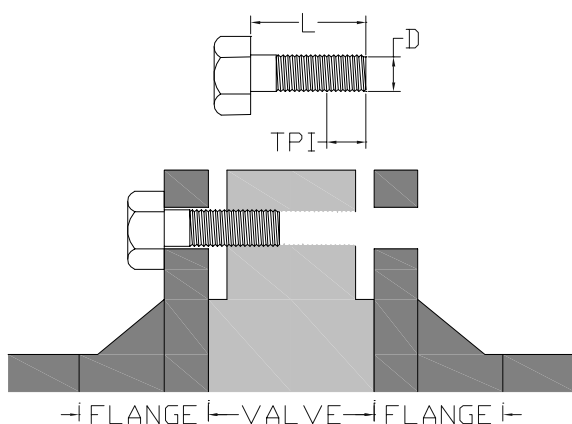
Size	D	TPI	L	Qty
2	5/8"	11	4-1/4"	4
2½	5/8"	11	4-3/4"	4
3	5/8"	11	5"	4
4	5/8"	11	5-1/4"	8
5	3/4"	10	5-1/2"	8
6	3/4"	10	5-1/2"	8
8	3/4"	10	6"	8
10	7/8"	9	6-1/2"	12
12	7/8"	9	7-1/4"	12
14	1"	8	8"	12
16	1"	8	8-3/4"	16
18	1-1/8"	7	9-1/2"	16
20	1-1/8"	7	10-1/2"	20
24	1-1/4"	7	12"	20

#### 731 / 741 Wafer Valve - Stud Bolt



Size	D	TPI	L	Qty
2	5/8"	11	5-1/8"	4
2½	5/8"	11	5-1/8"	4
3	5/8"	11	5-1/2"	4
4	5/8"	11	5-1/2"	8
5	3/4"	10	6-3/8"	8
6	3/4"	10	6-3/8"	8
8	3/4"	10	6-1/4"	8
10	7/8"	9	7-1/2"	12
12	7/8"	9	8-3/8"	12
14	1"	8	8-3/4"	12
16	1"	8	10"	16
18	1-1/8"	7	11-1/8"	16
20	1-1/8"	7	12"	20
24	1-1/4"	7	13-13/16"	20

#### 732 / 742 Lugged Valve - Cap Screws



Size	D	TPI	L	Qty
2	5/8"	11	1-1/2"	8
2½	5/8"	11	1-1/2"	8
3	5/8"	11	1-1/2"	8
4	5/8"	11	1-3/4"	16
5	3/4"	10	1-3/4"	16
6	3/4"	10	2"	16
8	3/4"	10	2-1/4"	16
10	7/8"	9	2-1/4"	24
12	7/8"	9	2-1/2"	24
14	1"	8	2-1/2"	24
16	1"	8	3-1/4"	32
18	1-1/8"	7	3-1/4"	32
20	1-1/8"	7	3-1/4"	40
24	1-1/4"	7	3-1/2"	40

## FNW FIG. 157

FNW figure 157 high performance valves are designed to fit between ANSI B16.5 class 150 flanges and assume the following:

1. Use of standard 0.062 inch gasket.
2. The minimum flange thickness of weld neck flanges per ANSI B16.5.
3. Heavy hex nuts for studs.

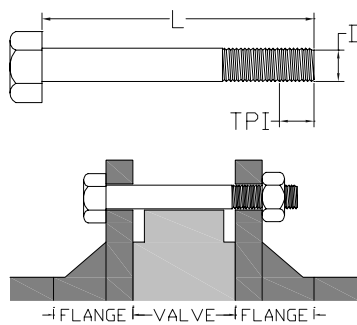
**CAUTION:** Dimensions provided for flange bolting are intended only as a guide. Bolt lengths may vary due to manufacturing tolerances in valves, gaskets, flange bolts and flanges.

**WARNING:** Improper bolt and stud lengths could result in leakage at the flange resulting in death or serious injury.

Note: When using metallic spiral wound gaskets, 0.12 inches should be added to bolt or stud length "L".

### 157 Wafer Valve - Cap Screws

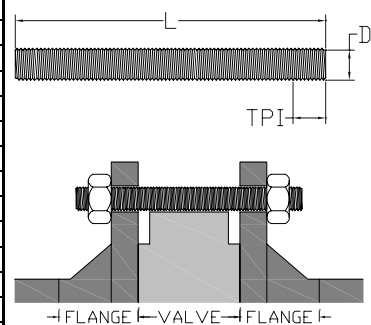
Size	D	TPI	L	Qty
3	5/8"	11	4-3/4"	4
4	5/8"	11	5"	8
5	3/4"	10	5-1/2"	8
6	3/4"	10	5-1/2"	8
8	3/4"	10	6"	8
10	7/8"	9	6-1/2"	12
12	7/8"	9	7"	12
14	1"	8	8"	12
16	1"	8	8-1/2"	16
18	1-1/8"	8	9-1/2"	16
20*	1-1/8"	8	10-1/4"	16
			4-1/2"	4
			3-1/4"	4
24*	1-1/4"	8	12"	16
			4-5/8"	4
			3-5/8"	4



\* 20" & 24" valves have blind tapped holes near the stem of the valve. Cap screw lengths are indicated for the seat side (shorter length) and other side of the valve.

### 157 Wafer Valve - Stud Bolts

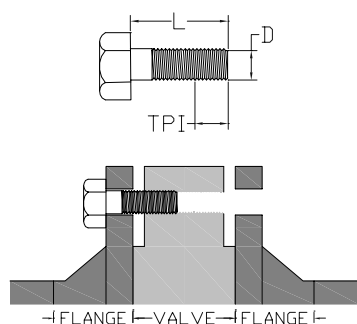
Size	D	TPI	L	Qty
3	5/8"	11	5-3/4"	4
4	5/8"	11	6"	8
5	3/4"	10	6-1/2"	8
6	3/4"	10	6-1/2"	8
8	3/4"	10	7"	8
10	7/8"	9	7-3/4"	12
12	7/8"	9	8-1/4"	12
14	1"	8	9-1/2"	12
16	1"	8	10"	16
18	1-1/8"	8	11"	16
20*	1-1/8"	8	11-1/2"	16
			6-1/8"	4
			4-7/8"	4
			13-1/2"	16
24*	1-1/4"	8	6-3/8"	4
			5-3/8"	4



\* 20" & 24" valves have blind tapped holes near the stem of the valve. Stud bolt lengths are indicated for the seat side (shorter length) and other side of the valve.

### 157 Lugged Valve - Cap Screws

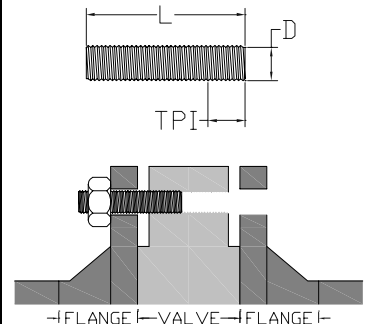
Size	D	TPI	L	Qty
3	5/8"	11	1-3/4"	8
4	5/8"	11	1-7/8"	16
5	3/4"	10	2"	16
6	3/4"	10	2"	16
8	3/4"	10	2-1/4"	16
10	7/8"	9	2-1/2"	24
12	7/8"	9	2-3/4"	24
14	1"	8	3"	24
16	1"	8	3-1/4"	32
18	1-1/8"	8	3-1/2"	32
20*	1-1/8"	8	4"	32
			4-1/2"	4
			3-1/4"	4
24*	1-1/4"	8	4-5/8"	32
			4-5/8"	4
			3-5/8"	4



\* 20" & 24" valves have blind tapped holes near the stem of the valve. Cap screw lengths are indicated for the seat side (shorter length) and other side of the valve.

### 157 Lugged Valve - Stud Bolts

Size	D	TPI	L	Qty
3	5/8"	11	3"	8
4	5/8"	11	3"	16
5	3/4"	10	3-1/4"	16
6	3/4"	10	3-1/4"	16
8	3/4"	10	3-1/2"	16
10	7/8"	9	4"	24
12	7/8"	9	4-1/4"	24
14	1"	8	4-3/4"	24
16	1"	8	5-1/4"	32
18	1-1/8"	8	5-1/2"	32
20*	1-1/8"	8	5-3/4"	32
			6-1/8"	4
			4-7/8"	4
			6-3/4"	32
24*	1-1/4"	8	6-3/8"	4
			5-3/8"	4



\* 20" & 24" valves have blind tapped holes near the stem of the valve. Stud bolt lengths are indicated for the seat side (shorter length) and other side of the valve.