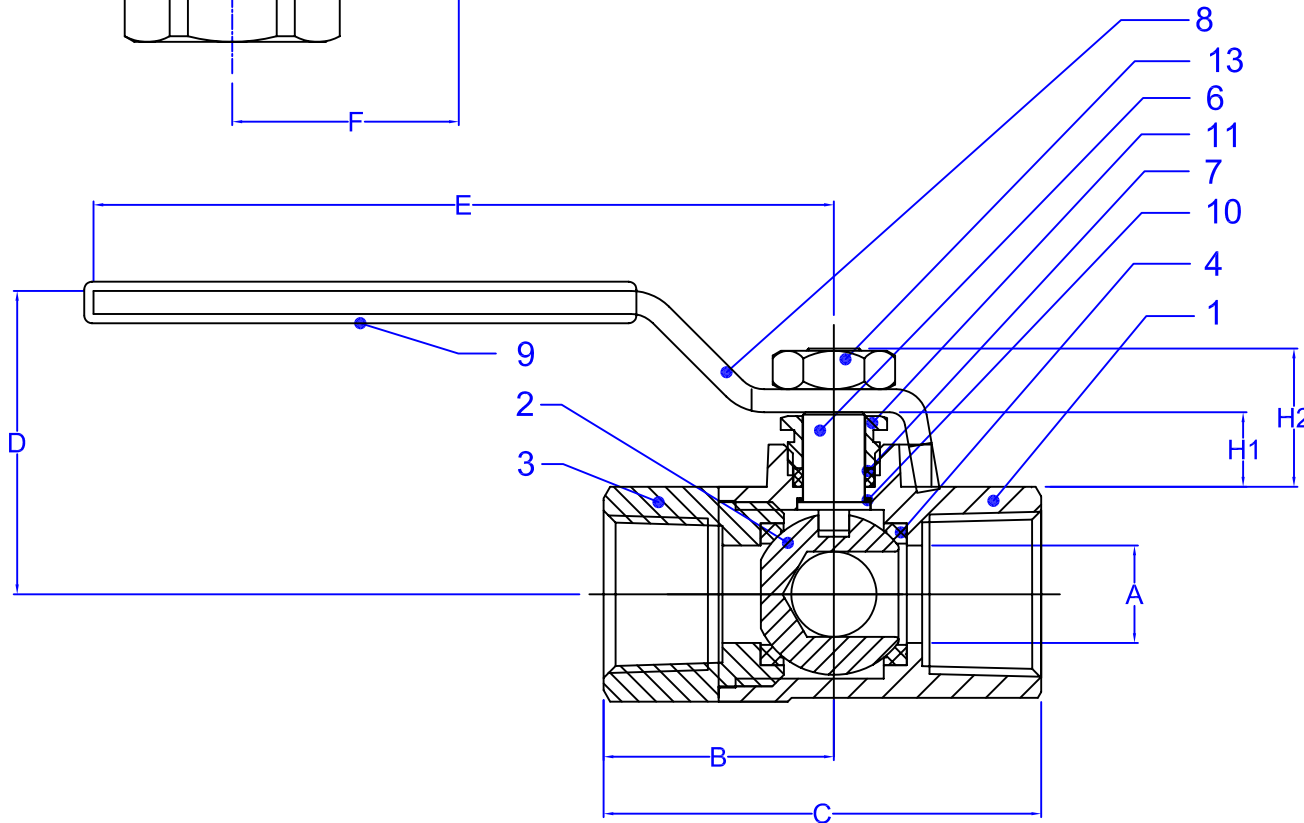


SIZE	A (+0.006)	B	C (+/- 0.039)	D	E	F	G	H	H1	H2	I	S (+0.004)	ØT (mm) (-0.05)	STEM THREAD
1/4	0.37	0.89	1.93	1.43	3.27	0.93	0.87	1.37	0.41	0.74	10-24 UNC-2B	0.18	8	M8x1.25-6g
3/8	0.37	0.94	1.97	1.43	3.27	0.93	0.87	1.37	0.41	0.74	10-24 UNC-2B	0.18	8	M8x1.25-6g
1/2	0.50	1.14	2.20	1.46	3.78	1.10	0.87	1.37	0.43	0.77	10-24 UNC-2B	0.18	8	M8x1.25-6g
3/4	0.68	1.20	2.41	1.83	3.94	1.28	0.87	1.37	0.61	1.05	10-24 UNC-2B	0.22	8.5	M8x1.25-6g
1	0.87	1.49	3.00	2.28	4.72	1.60	0.87	1.37	0.64	1.08	10-24 UNC-2B	0.25	9.5	M8x1.25-6g
1-1/4	1.00	1.64	3.29	2.46	4.72	1.76	0.94	1.50	0.68	1.12	1/4-20 UNC-2B	0.25	9.5	M8x1.25-6g
1-1/2	1.25	1.91	3.79	2.98	6.30	2.02	0.94	1.50	0.75	1.38	1/4-20 UNC-2B	0.43	14	M14x2-6g
2	1.50	1.50	3.94	3.14	6.30	2.17	0.94	1.50	0.72	1.33	1/4-20 UNC-2B	0.43	14	M14x2-6g

Ref. No.	Description	Material	Qty	Remarks
1	Body	ASTM B584 C89520	1	
2	Ball	ASTM B124 C37700	1	
3	End Cap	ASTM B124 C37700	1	
4	Seat	RTFE	2	
6	Stem	ASTM B16 C36000	1	
7	Stem Packing	RTFE + CARBON FIBER	1	
8	Handle	A36 CARBON STEEL	1	Nickel Plated
9	Handle Cover	PLASTIC	1	
10	Thrust Washer	RTFE	1	
11	Gland Nut	ASTM B16 C36000	1	
12	Handle Washer	A36 CARBON STEEL	1	Zinc Plated
13	Handle Nut	ASTM A283 SS41	1	Nickel Plated



150 PSI WSP
DESIGNED TO: MSS SP-110



TITLE: FIGURE 413 3-WAY BRASS BALL VALVE (L-PORT), 400WOG NON-SHOCK, 150WSP

DATE: 10-10-2008 BY: PEA APP'D: KMC UNITS: IN (or as ind) SCALE: NONE REV DATE:

FILE: 413_025-2.dwg

MODEL: 413

DWG NO: 413/0.25-2

REV: 0

THIS DRAWING CONTAINS CONFIDENTIAL AND PROPRIETARY INFORMATION OF FNW VALVE AND IS SUBMITTED TO YOU FOR THE LIMITED PURPOSE OF PROVIDING YOU INFORMATION ON PRODUCTS AND SYSTEMS PURCHASED FROM FNW VALVE. BY RECEIVING THIS DOCUMENT, YOU AGREE NOT TO DISCLOSE SUCH INFORMATION TO OTHERS EXCEPT BY WRITTEN PERMISSION.