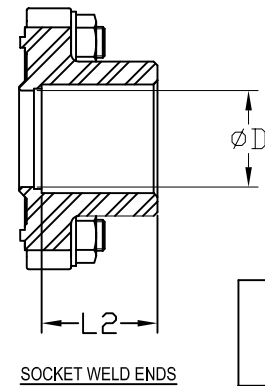
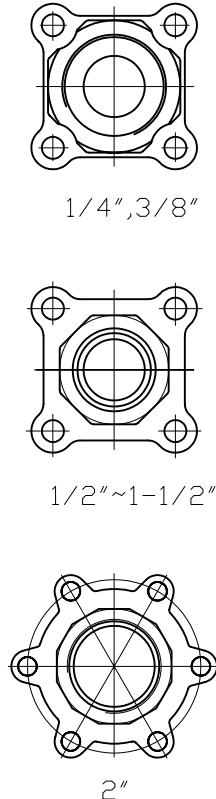


Ref. No.	Description	Material		Qty
		Fig 321	Fig 321C	
1	Body	ASTM A216 Gr. WCB		1
2	Ball	316SS		1
3	End Cap	ASTM A216 Gr. WCB		2
4	Seat	RTFE	Carbon Filled TFE	2
5	Body Seal	PTFE	Carbon Filled TFE	2
6	Stem	316SS		1
7	Stem Packing	PTFE	Carbon Filled TFE	1 Set
8	Handle	304SS		1
9	Handle Cover	Vinyl		1
10	Thrust Washer	PTFE	Carbon Filled TFE	1
11	Gland Nut	304SS		1
11A	Gland Ring	304SS		1
11B	Tab Washer	304SS		1
12	Belleville Washer	410SS		1
13	Handle Nut	304SS		1
14	Locking Pad	304SS		1
17	Body Bolt	304SS		4-6
18	Body Nut	304SS		4-6
19	Body Washer	304SS		4-6
20	Stop Pin	304SS		1



Size	ØD	E	L	L2	H	H1	H2	S	ØK	ØM
1/4	0.39	5.12	2.55	0.39	2.52	0.28	1.17	0.26	1.42/F03	M5
3/8	0.39	5.12	2.55	0.39	2.52	0.28	1.17	0.26	1.42/F03	M5
1/2	0.59	5.12	2.85	0.39	2.83	0.65	1.14	0.26	1.42/F03	M5
3/4	0.79	5.12	3.36	0.51	3.01	0.72	1.30	0.26	1.42/F03	M5
1	0.98	5.28	4.15	0.51	3.27	0.99	1.42	0.31	1.65/F04	M5
1-1/4	1.26	6.69	4.37	0.51	3.46	0.95	1.57	0.31	1.65/F04	M5
1-1/2	1.50	8.15	5.01	0.51	4.10	1.25	1.86	0.38	1.97/F05	M6
2	1.97	8.46	5.71	0.63	5.24	1.11	2.81	0.47	2.76/F07	M6

FNW™

4120 NE Columbia Blvd
 Portland, OR 97211
 Phone (503) 287-8383
 Fax (503) 281-9677

TITLE/DESCRIPTION: Fig 321/321C, 3PC, 2000 WOG CARBON STEEL x STAINLESS STEEL BALL VALVE, FULL PORT, NPT OR SW ENDS

DATE: 8-3-2005 BY: PEA UNITS: INCHES
 SCALE: NONE APP'D: KMC PAGE(S): 1

MODEL: 321 & 321C
 DWG NO: FNW321/321C

NOTES: rev 1 - add SW dimensions

FILE: 321_025-2.dwg LOC: PORTLAND
 PAGE SIZE: 8.5 x 11L REV: 1 R'DATE: 5-30-2007

THIS DRAWING CONTAINS CONFIDENTIAL AND PROPRIETARY INFORMATION OF FNW VALVE AND IS SUBMITTED TO YOU FOR THE LIMITED PURPOSE OF PROVIDING YOU INFORMATION ON PRODUCTS AND SYSTEMS PURCHASED FROM FNW VALVE. BY RECEIVING THIS DOCUMENT, YOU AGREE NOT TO DISCLOSE SUCH INFORMATION TO OTHERS EXCEPT BY WRITTEN PERMISSION OF FNW VALVE.