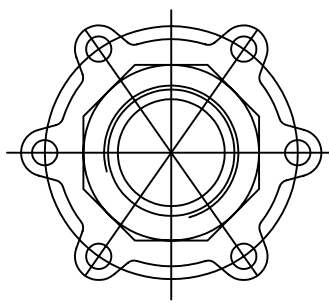
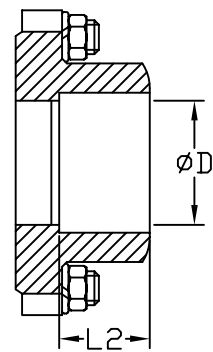


1/4" ~ 2-1/2"



3" ~ 4"



SW ENDS

Size	ØD	E	L	L2	H
1/4	0.39	3.82	2.36	0.57	1.97
3/8	0.47	3.82	2.36	0.57	1.97
1/2	0.63	4.96	2.95	0.63	2.36
3/4	0.79	4.96	3.15	0.67	2.48
1	0.98	5.71	3.54	0.75	3.15
1-1/4	1.26	5.71	4.33	0.90	3.39
1-1/2	1.57	8.03	4.72	0.94	3.70
2	1.97	8.03	5.51	1.02	4.09
2-1/2	2.56	9.76	7.28	1.34	5.51
3	3.15	9.76	8.07	1.42	5.98
4	3.94	11.50	9.44	1.50	7.09

Ref. No.	Description	Material	Qty
1	Body	ASTM A216 Gr. WCB	1
2	Ball	316SS	1
3	End Cap	ASTM A216 Gr. WCB	2
4	Seat	RTFE	2
5	Body Seal	PTFE	2
6	Stem	316SS	1
7	Stem Packing	PTFE	1 Set
8	Handle	304SS	1
9	Handle Cover	Vinyl	1
10	Thrust Washer	PTFE	1
11	Gland Nut	304SS	1
12	Handle Washer	304SS	1
13	Handle Nut	304SS	1
14	Locking Pad	304SS	1
17	Body Bolt	304SS	4-6
18	Body Nut	304SS	4-6
19	Body Washer	304SS	4-6

FNWTM

4120 NE Columbia Blvd
Portland, OR 97211
Phone (503) 287-8383
Fax (503) 281-9677

TITLE/DESCRIPTION: Fig 311, 3PC, FULL PORT 1000 WOG, CARBON STEEL X STAINLESS, BALL VALVE, NPT OR SW END

DATE: 8-3-05 BY: PEA UNITS: INCHES

SCALE: NONE APP'D: KMC PAGE(S): 1

MODEL: 311

DWG NO: FNW311

NOTES: rev 1 - add SW dimensions

FILE: 311_025-4 LOC: PORTLAND

PAGE SIZE: 8.5 x 11L REV: 1 R'DATE: 5-31-2007

THIS DRAWING CONTAINS CONFIDENTIAL AND PROPRIETARY INFORMATION OF FNW VALVE AND IS SUBMITTED TO YOU FOR THE LIMITED PURPOSE OF PROVIDING YOU INFORMATION ON PRODUCTS AND SYSTEMS PURCHASED FROM FNW VALVE. BY RECEIVING THIS DOCUMENT, YOU AGREE NOT TO DISCLOSE SUCH INFORMATION TO OTHERS EXCEPT BY WRITTEN PERMISSION OF FNW VALVE.