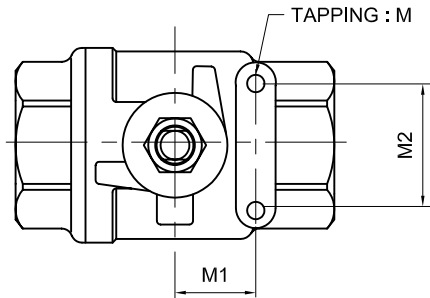
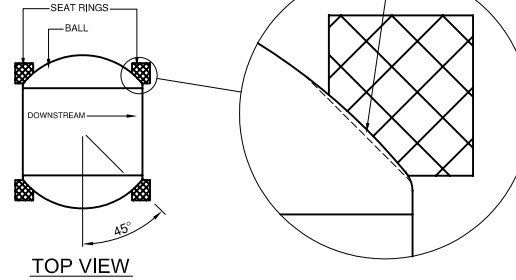


# Fig No: F220SEV

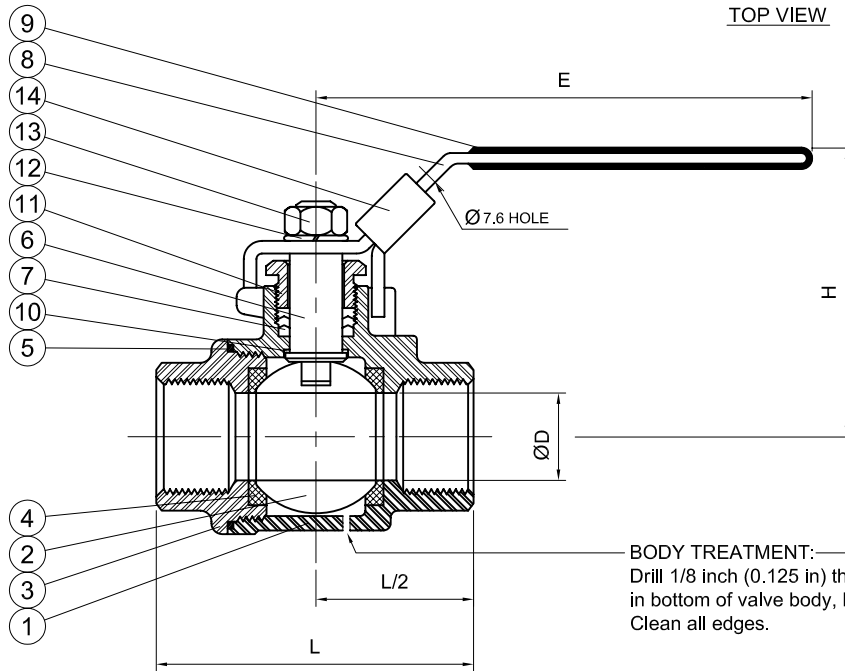


**BALL TREATMENT:**  
Ball face to be milled approx. 10/1000 inch at 45 deg to flow path (as viewed from top), left side, so that milled chamfer is downstream when valve is closed. Clean all edges.



### MATERIALS LIST

No.	NAME PART	MATERIAL
1.	BODY	ASTM A351 Gr.CF8M
2.	BALL	SS316
3.	END CAP	ASTM A351 Gr.CF8M
4.	SEAT RING	RTFE(PTFE+15%G.F.)
5.	BODY SEAL	PTFE
6.	STEM	SS316
7.	STEM SEAL	PTFE
8.	HANDLE	SS304
9.	HANDLE COVER	PLASTIC
10.	THRUST WASHER	PTFE
11.	GLAND NUT	SS304
12.	HANDLE WASHER	SS304
13.	HANDLE NUT	SS304
14.	LOCKING PAD	SS304



**BODY TREATMENT:**  
Drill 1/8 inch (0.125 in) through hole in bottom of valve body, between seats. Clean all edges.

### DIMENSIONS unit: inch

SIZE	DØ	L	H	E
1/4"	0.39	2.17	2.52	3.74
3/8"	0.47	2.17	2.52	3.74
1/2"	0.62	2.55	2.52	4.92
3/4"	0.78	3.03	2.64	4.92
1"	0.98	3.46	3.27	5.51
1-1/4"	1.25	4.01	3.50	5.51
1-1/2"	1.57	4.33	3.93	7.87
2"	1.96	4.92	4.25	7.87
2-1/2"	2.55	6.45	5.91	9.84
3"	3.14	7.12	6.34	9.84

### MOUNTING PAD

SIZE	M1	M2	M
1/4" TO 1/2"	0.50	1.12	10-24UNC
3/4" TO 1"	0.88	1.38	10-24UNC
1-1/4" TO 2"	1.00	1.50	1/4"-20UNC
2-1/2" TO 3"	1.18	2.76	1/4"-20UNC

<b>FNW</b> <sup>TM</sup>	APPROVED BY.	CHECK BY.	DRAWN BY.	DRAWING NO.	MATERIAL	UNIT	DESCRIPTION SAFETY EXHAUST VALVE - MODIFIED 220 BALL VALVE FOR DOWNSTREAM PRESSURE RELIEF IN CLOSED POSITION TWO PIECE SCREW BODY FULL PORT BALL VALVE, END CONNECTION: THREADED END, 2000/1500 W.O.G.
	SIGN		PEA	220-D-SEV		INCH	
	DATE	03/03/2005		REVISION	01 03/07/2005	SCALE	